



KIT WIRELESS THOR CONSOLE



**Instructions and
warning book**



INDEX

1. Specification.....	4
2. Precautions.....	4
3. Download and install app.	6
4. Install the smart kit (Wireless module).....	7
5. User RegistrtaTion.	9
6. Network configuration.	12
7. How to use app.	24
8. Special functions.....	26

1. SPECIFICATION.

Model: EU-OSK105

Antenna Type: Printed PCB Antenna

Frequency Band: 2400-2483.5MHz

Operation Temperature: 0 C~45 C/32 F~113 F

Operation Humidity: 10%~85%

Power Input: DC 5V/500mA

Maximum TX Power: <20dBm

2. PRECAUTIONS.

- Applicable system: iOS, Android.
 - Please keep you APP up to date with the latest version.
 - Due to special situation may be occurred, we explicitly claims below: Not all of the Android and iOS system are compatible with APP. We will not be responsible for any issue as a result of the incompatibility.
- **Wireless safety strategy.** Smart kit only support WPA-PSK/WPA2-PSK/WPA3-SAE encryption and none encrytion.WPA-PSK/WPA2-PSK/ WPA3-SAE encryption is recommended.

- **Caution:**
 - Due to different network configuration, sometimes the verification process can end in time-out. If this situation occurs, the screens between Tab and App may not be the same.
 - Smart Phone camera needs to be 5 million pixels or above to make sure scan QR code well.
 - Due to different network situation, sometimes, request time-out could happen, thus, it is necessary to do network configuration again.
 - The APP system is subject to update without prior notice for product function improvement. The actual network configuration process may be slightly different from the manual, the actual process shall prevail.

3. DOWNLOAD AND INSTALL APP.

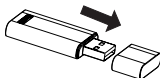
- Android Phone users: Go to Google Play, search “CLIMAsmart” app and download it.
- iOS users: Go to APP Store, search “CLIMAsmart” app and download it.



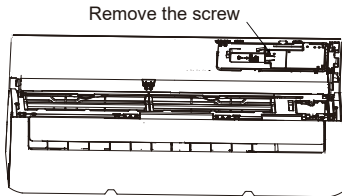
4. INSTALL THE SMART KIT (WIRELESS MODULE).

Note: Illustrations in this manual are for explanatory purposes. The actual shape of your indoor unit may be slightly different. The actual shape shall prevail.

- 1) Remove the protective cap of the smart kit.



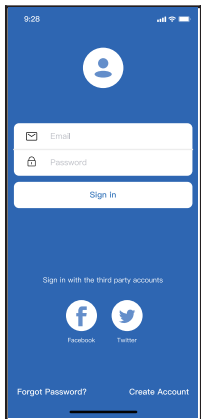
2) Open the front panel, unscrew the display cover and remove it, then insert the smart kit into the reserved interface. Reinstall the display cover.



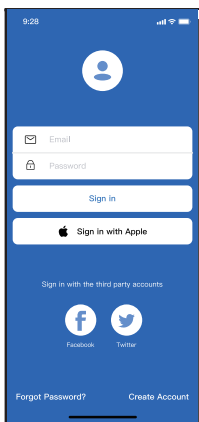
WARNING: This interface is only compatible with SMART KIT(Wireless module) provided by the manufacturer. For the smart device access, replacement, maintenance operations must be carried out by professional staff.

5. USER REGISTRATION.

- Please ensure your mobile device is connected to Wireless router. Also, the Wireless router has already connected to Internet before doing user registration and network configuration.
- Log in your email box and active your registration account by clicking link in case you forget the password. You can log in with the third party accounts.



Android



iOS

① Click "Create Account"

9:41

Create Account

Enter your Email address

Password

Confirm Password

Password need 6-20 characters,must contain letters and numbers.

Register

☐ I have read and agree to the terms and privacy

- ② Enter your email address and password, and then click "Register" indirizzo mail

6. NETWORK CONFIGURATION.

Cautions

- It is necessary to disconnect from any other around network and make sure the Android or iOS device just connect to the Wireless network you want to configure.
- Make sure the Android or iOS device Wireless function works well and can be connected back to your original Wireless network automatically.

Reminder:

User must finish all the steps in 8 minutes after powering on air conditioner, otherwise you need to power on it again.

Using Android or iOS device to do network configuration.

- Make sure your mobile device has already been connected to the Wireless network which you want to use. Also, you need to disconnect from the other irrelevant Wireless network in case it influences your configuration process.
- Disconnect the power supply of AC.
- Connect the power supply of AC, and press the “LED DISPLAY” or “DO NOT DISTURB” button seven times in 10 seconds.

- When the AC displays “AP”, it means that the AC Wireless has already entered into “AP” mode.

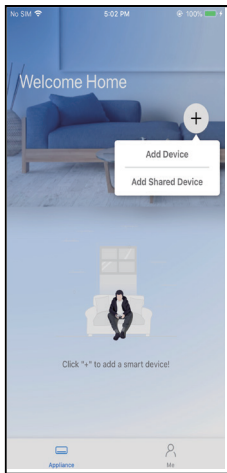
Note:

There are two ways to finish the network configuration.

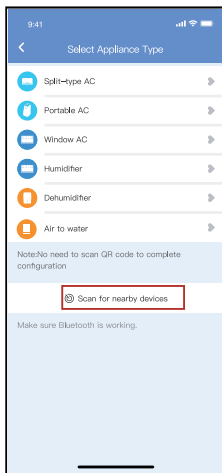
- Network configuration by Bluetooth scan
- Network configuration by select appliance type

Network configuration by Bluetooth scan.

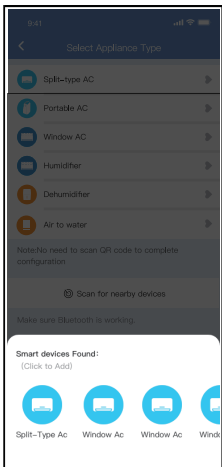
Note: Make sure the bluetooth of your mobile device is working.



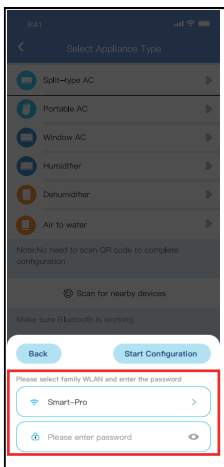
① Press “+ Add Device”



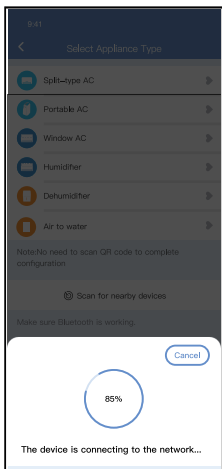
② Press “Scan for nearby devices”



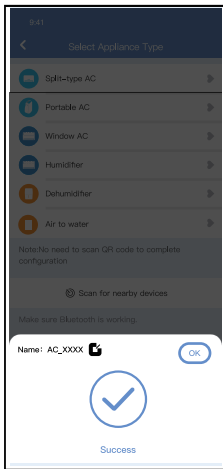
- ③ Wait smart devices to find, then click to add it



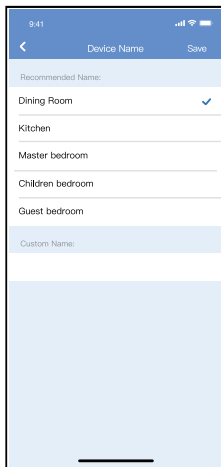
- ④ Select home Wireless, enter the password



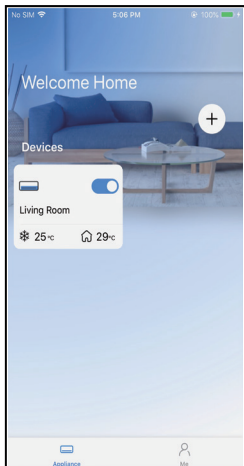
⑤ Wait connecting to the network



⑥ Configuration Success, you can modify the default name.

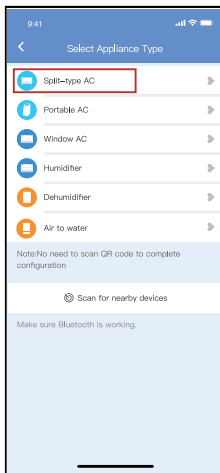


- ⑦ You can choose an existing name or customize a new name

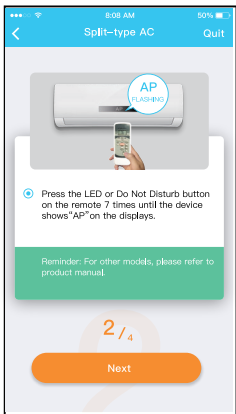
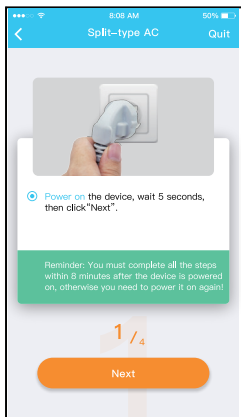


- ⑧ Bluetooth network configuration is successful, now you can see the device in the list.

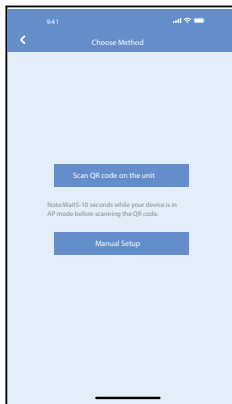
Network configuration by select appliance type :



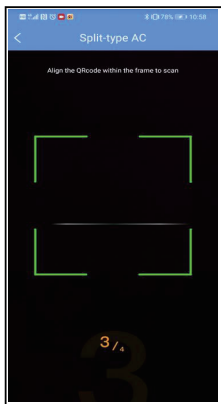
- ① If the bluetooth network configuration is failure, please select the appliance type.



② please follow the above steps to enter "AP" mode.



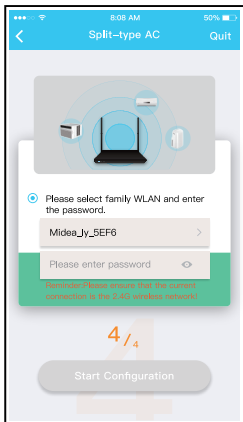
③ Choose the network configuration method.



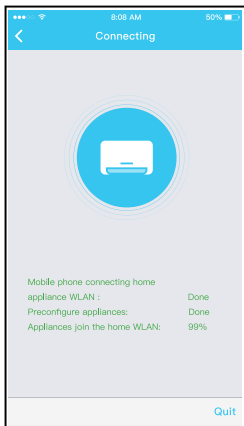
④ Choose the “Scan the QR code” method.



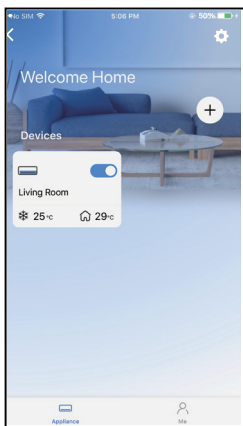
- ⑤ When choose the "Manual Setup" method(Android). Connect to the wireless network(iOS)



- ⑥ Please enter password



⑦ Network configuration is successful



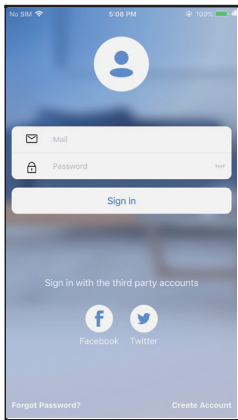
⑧ Configuration Success, you can see the device in the list.

NOTE:

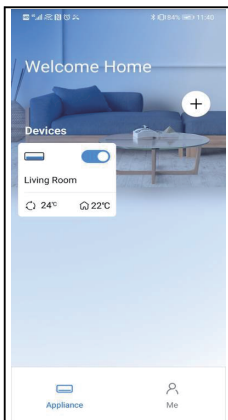
- At the end of the network configuration, the APP will show the login notification on the screen.
- Due to different internet environment, it is possible that the device status still display “offline” . If this situation occurs, it is necessary to refresh the device list on the APP and make sure the device status become “online” . Alternatively, user can turn off the power and turn on it again, the device status will become “online” after few minutes.

7. HOW TO USE APP.

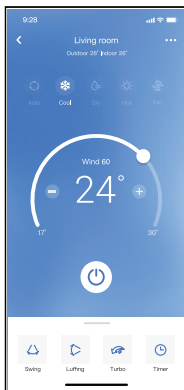
Please ensure both your mobile device and air conditioner are connected to the Internet before using app to control the air conditioner via internet, please follow the next steps:



① Click " Sign In "



② Choose the air conditioner.



- ③ Thus, user can control air conditioners on/off status, operation mode, temperature, fan speed and so on.

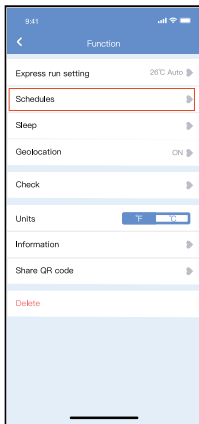
NOTE:

Not all the function of the APP is available on air conditioner. For example: ECO, Turbo, Swing function, please check the user manual to find more information.

8. SPECIAL FUNCTIONS.

Schedule.

Weekly program: user can make a set to turn on or off AC on specific time.



9:41 Schedules Confirm

24H 12

9	04
10	05
11	06 On
12	07 Off
13	08

Repeat Mon, Thur. >

Settings Cool 17°C High >

Label Unnamed >

9:41 Repeat Confirm

Commonly used:

Every day ✓

Weekdays

Only once

Custom:

Monday

Tuesday

Wednesday

Thursday

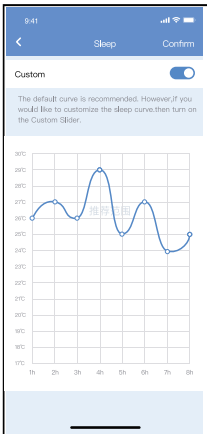
Friday

Saturday

Sunday

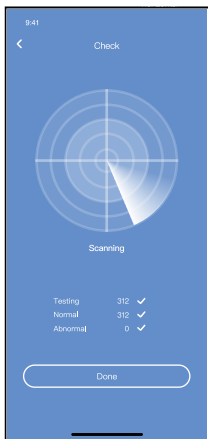
Sleep

User can customize the Function sleep by setting target temperature.



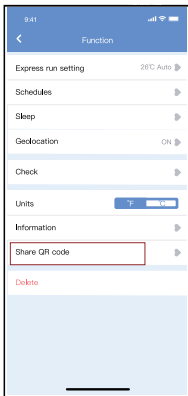
Check (depending on the model).

The user with this function can check the operating status of the air conditioner. At the end of this procedure, the user can view the activities in normal operation, anomalies and detailed information.



Share device

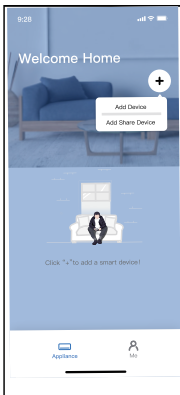
The air conditioner can be controlled by multi-users at the same time by Share Device function.



① Click "Shared QR code"



② QR code display.



- ③ The other users must log in ClimaSmart app first, then click Add Share Device on their own mobile, then ask them to scan the QR code.



- ④ Now the others can add the shared device.

CAUTIONS:

Wireless module models: EU-OSK105

ID FCC: 2AS2HMZNA21

IC: 24951-MZNA21

This device complies with Part 15 of the FCC Rules and it contains licence-exempt transmitter(s)/receiver(s) that comply with Innovation, Science and Economic Development Canada's licence-exempt RSS(s).

Operation is subject to the following condition:

- (1) This device may not cause harmful interference.

Only operate the device in accordance with the instructions supplied.

Changes or modifications to this unit not expressly approved by the party responsible for compliance could void the user's authority to operate the equipment.

This device complies with FCC radiation exposure limits set forth for an uncontrolled environment. In order to avoid the possibility of exceeding the FCC radio frequency exposure limits, human proximity to the antenna shall not be less than 20cm during normal operation.

NOTE: This equipment has been tested and found to comply with the limits for a Class B digital device, pursuant to part 15 of the FCC Rules. These limits are designed to provide reasonable protection against harmful interference in a residential installation. This equipment generates, uses and can radiate radio frequency energy and, if not installed and used in accordance with the instructions, may cause harmful interference to radio communications. However, there is no guarantee that interference will not occur in a particular installation. If this equipment does cause harmful interference to radio or television reception, which can be determined by turning the equipment off and on, the user is encouraged to try to correct the interference by one or more of the following measures:

- Reorient or relocate the receiving antenna.
- Increase the separation between the equipment and receiver.
- Connect the equipment into an outlet on a circuit different from that to which the receiver is connected.
- Consult the dealer or an experienced radio/TV technician for help.

RED Declaration of Conformity (DoC)

Unique identification of this DoC: Dec.14 2023

We,

Immergas S.p.A.

Via Cisa Ligure, 95 | 42041 Brescello (RE) – ITALY

declare under our sole responsibility that the product:

product name: Smart Kit

trade name: IMMERGAS

type or model: EU-OSK105

relevant supplementary information: N/A

to which this declaration relates is in conformity with the essential requirements and other relevant requirements of the RE Directive (2014/53/EU).

The product is in conformity with the following standards and/or other normative documents:

HEALTH & SAFETY (Art. 3(1)(a)):

EN IEC 62311:2020

EN 62311:2008

EN 60335-2-40:2003+A11:2004+A12:2005+A1:2006+A2:2009+A13:2012

EN 60335-1:2012+A11:2014+A13:2017+A1:2019+A14: 2019+A2: 2019+A15:2021

EN 62233:2008

EN 50665:2017

EMC (Art. 3(1)(b)):

EN IEC 55014-1:2021

EN IEC 55014-2:2021

EN IEC 61000-3-2:2019+A1:2021

EN 61000-3-3:2013+A1:2019+A2:2021

SPECTRUM (Art. 3(2)):

EN 300 328 V2.2.2 (2019-07)

EN 301 489-1 V2.2.3 (2019-11)

EN 301 489-17 V3.2.4 (2020-09)

OTHER (incl. Art. 3(3) and voluntary specs):

(title and/or number and date of issue of the standard(s) or other normative document(s))

Limitation of validity (if any): N/A

Supplementary information: N/A

Notified body involved: N/A

Technical file held by: GD Midea Air-Conditioning Equipment Co., Ltd.

Place and date of issue (of this DoC): Brescello/2023-12-18

Signed by or for the manufacturer:

Name (in print): Guareschi Mauro

Title: R&D Manager



immergas.com

Immergas S.p.A.
42041 Brescello (RE) - Italy
Tel. 0522.689011
Fax 0522.680617

Cod. 1.049221ENG - rev. ST.007733/001 - 02/24